



# SHIMMER

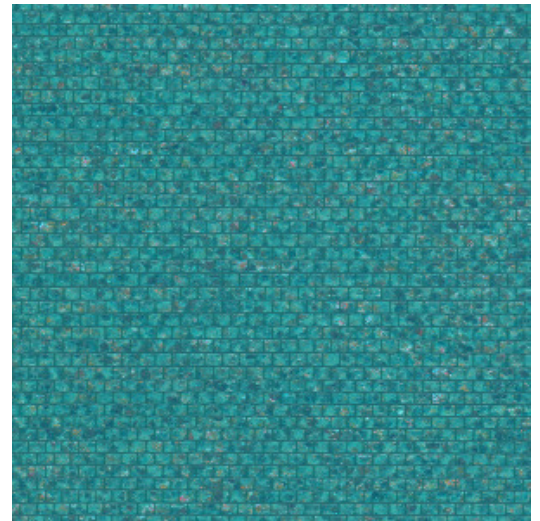
Collection All Naturals

## Story behind the collection

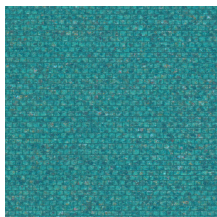
Arte has always had a predilection for unusual materials, with the brand's designers creating superb wallcoverings from many unique materials they find around the world. Designs with natural materials are a mainstay of its collections. Raffia, sisal, mica and banana bark are just a few of the stunning natural products Arte uses for its amazingly diverse range of natural wallcoverings. This collection is a homage to the beauty of these products.

## Technical specifications

Reference	<u>40350A</u> • Azure
Product category	Couture
Composition	Natural wallcovering on non-woven backing
Description	Handmade wallcovering with woven mica
Dimensions	Width 91.44 cm (36.00"), sold by the linear metre/yard
Pattern repeat	Free match 0 cm (0.00")
Adhesive	Arte Clearpro or a good quality dispersion adhesive
How to paste	Moisten the product, paste the wall
Light resistance	Good lightfastness
How to remove	Strippable
Fire retardant EU	B-s1, d0
Fire retardant US	Class A
Maintenance	Spongeable during hanging (dab away damp glue)



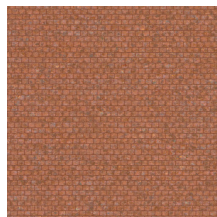
## Colourways (6)



40350A



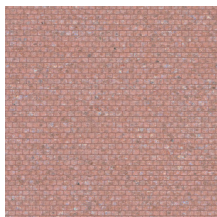
40351A



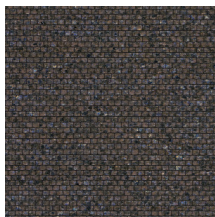
40352A



40353A



40354A



40355A

More info? [Click here](#)

Order samples, calculate quantities, view instructional videos, download technical information and more:  
[www.arte-international.com](http://www.arte-international.com)



ARTE®

wallcoverings for the ultimate in refinement