



# RATTAN

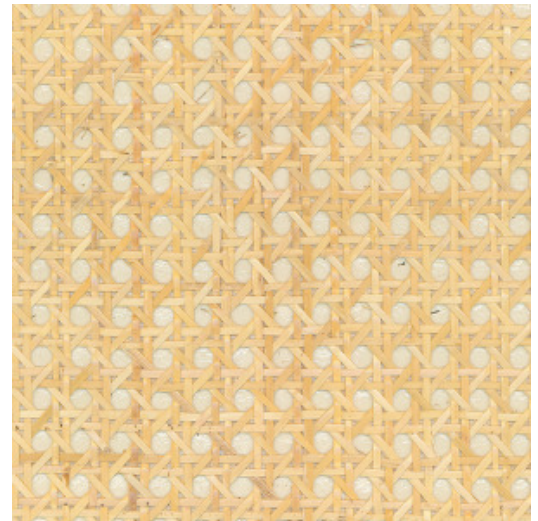
Collection All Naturals

## Story behind the collection

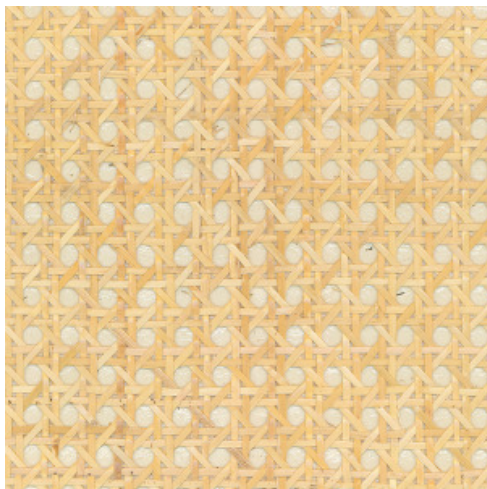
Arte has always had a predilection for unusual materials, with the brand's designers creating superb wallcoverings from many unique materials they find around the world. Designs with natural materials are a mainstay of its collections. Raffia, sisal, mica and banana bark are just a few of the stunning natural products Arte uses for its amazingly diverse range of natural wallcoverings. This collection is a homage to the beauty of these products.

## Technical specifications

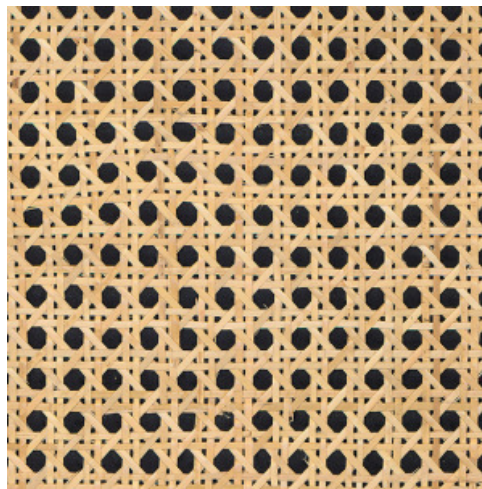
Reference	<u>85540A</u> • Off-white
Product category	Couture
Composition	Natural wallcovering on non-woven backing
Description	Handwoven rattan in which the shades of the natural fibres are clearly visible
Dimensions	Width 90 cm (35.43"), sold by the linear metre/yard
Pattern repeat	Free match 0 cm (0.00")
Remark	Rattan is handwoven and consists of tropical, natural fibres. The irregularities and colour differences are typical for this natural product. Differences in the strips are characteristic of the natural beauty.
Adhesive	Arte Clearpro or a good quality dispersion adhesive
How to paste	Paste the wall and wallcovering
Light resistance	Moderate lightfastness
How to remove	Strippable
Fire retardant EU	B-s1, d0
Fire retardant US	Class A
Maintenance	Spongeable during hanging (dab away damp glue)



## Colourways (2)



85540A



85541A

More info? [Click here](#)

Order samples, calculate quantities, view instructional videos, download technical information and more:  
[www.arte-international.com](http://www.arte-international.com)



ARTE®

wallcoverings for the ultimate in refinement