



# STRING

Collection Cantala

## Story behind the collection

This collection honours the pure beauty of natural materials like sisal, raffia and paper. The authentic, graceful look of these products is the key feature. The collection owes its name to the Agave cantala, an exotic plant of the Agave family. Sisal fibres are derived from its long, slender leaves which are often up to two metres long. We often see this sisal used in fashion and interior design.

## Technical specifications

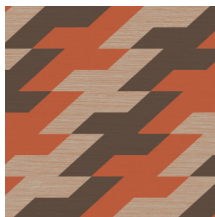
|                   |  |
|-------------------|--|
| Reference         | <u>48540</u> • Pistachio   |
| Product category  | Exquisite  |
| Composition       | Non-woven wallcovering   |
| Description       | Wallcovering with the timeless look of authentic sisal. The geometry and the large pattern make String a design with tremendous impact |
| Dimensions        | Width 90 cm (35.43"), sold by the linear metre/yard  |
| Pattern repeat    | Straight match 64 cm (25.20")  |
| Adhesive          | Arte Clearpro or a good quality dispersion adhesive  |
| How to paste      | Paste the wall   |
| Light resistance  | Good lightfastness   |
| How to remove     | Strippable   |
| Fire retardant EU | B-s1, d0   |
| Fire retardant US | Class A  |
| Maintenance       | Washable   |
| IMO Certified     |  |



## Colourways (6)



48 540



48 541



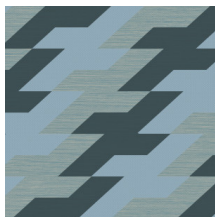
48 542



48 543

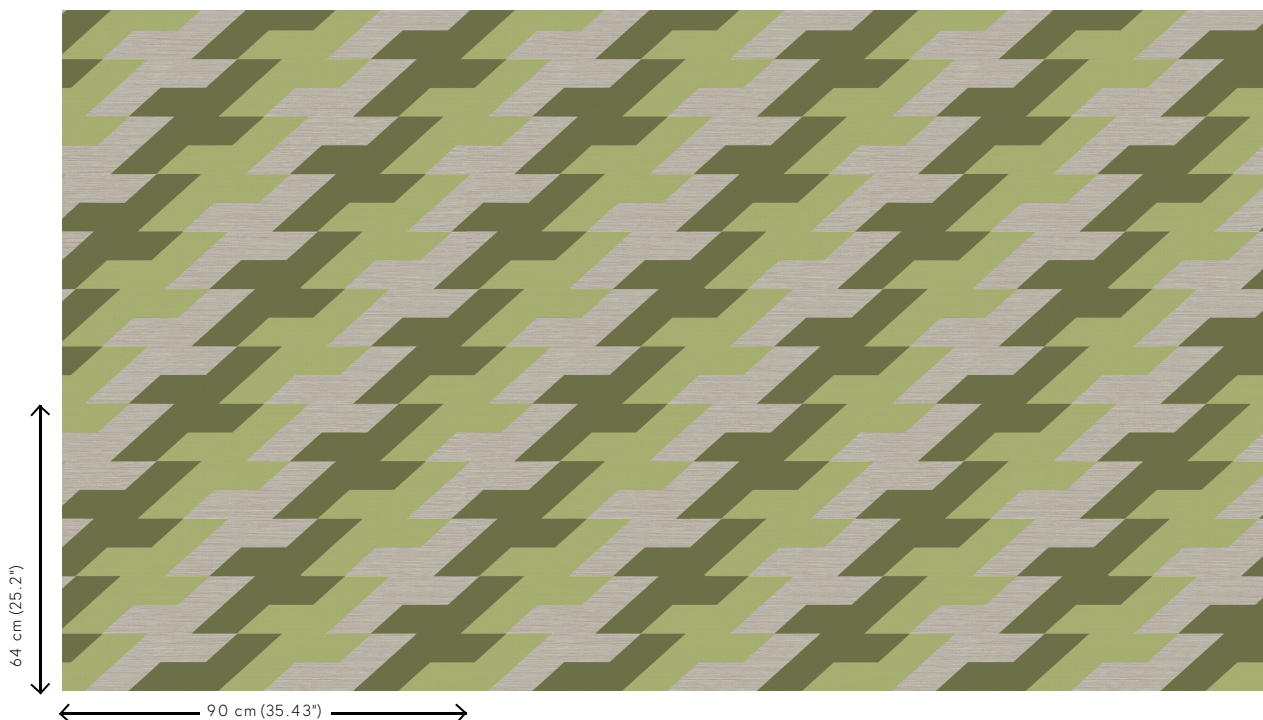


48 544



48 545

## View



More info? [Click here](#)

Order samples, calculate quantities, view instructional videos, download technical information and more:  
[www.arte-international.com](http://www.arte-international.com)



ARTE®

wallcoverings for the ultimate in refinement