



JAVA

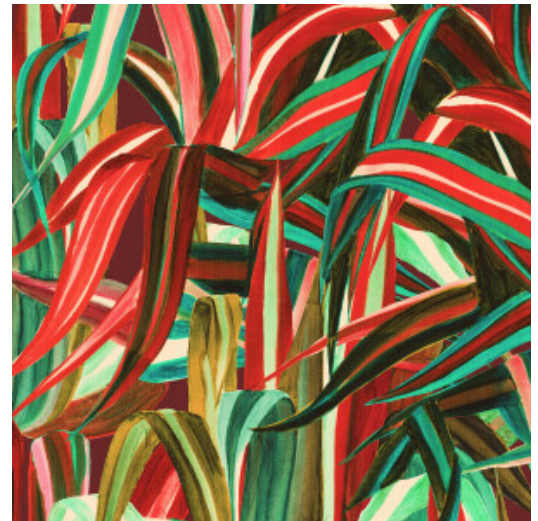
Collection Expedition

Story behind the collection

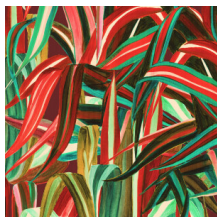
Long distance travel and exotic destinations have appealed to our imagination for centuries. The smaller the world becomes digitally, the greater the desire grows to really see some of it. Egypt, Persia, India, Java, China, ... Destinations along the inspiring Silk Road that stimulate all our senses.

Technical specifications

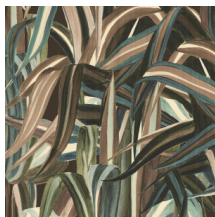
Reference	<u>72010</u> • Cherry
Product category	Exquisite
Composition	Natural wallcovering on non-woven backing
Description	An exuberant botanical decor with the feel of a hand-painted wallcovering, printed on a fil-à-fil jute
Dimensions	Width 100 cm (39.37"), sold by the linear metre/yard
Pattern repeat	Drop match 200/100 cm (78.74"/39.37")
Remark	Java is made from natural jute fibres. These are vertically aligned and glued to the surface with the fil-à-fil technique, creating a unique textile surface. The irregularity of the jute yarn is typical for a natural product and enhances the beauty of the wallcovering
Adhesive	Arte Clearpro or a good quality dispersion adhesive
How to paste	Paste the wall
Light resistance	Good lightfastness
How to remove	Strippable
Fire retardant EU	B-s1, d0
Fire retardant US	Class A
Maintenance	Spongeable during hanging (dab away damp glue)



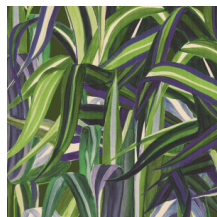
Colourways (3)



72010



72011



72012

View



More info? [Click here](#)

Order samples, calculate quantities, view instructional videos, download technical information and more:
www.arte-international.com



ARTE®

wallcoverings for the ultimate in refinement