

# TINNEROY

## Collection Lush

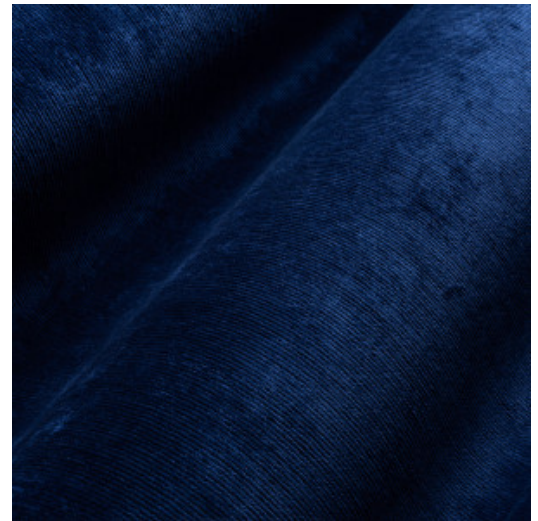


### Story behind the collection

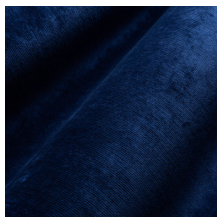
The rich fabrics of rib velvet, lush botanical prints and sophisticated weaving techniques make Lush a very detailed and luxurious collection. The cool metal accents combine perfectly with the soft, velvet fabrics and complete the look.

### Technical specifications

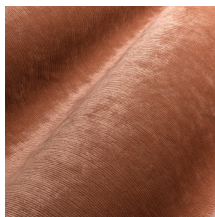
Reference	<u>29500</u>
Product category	Couture
Composition	Textile wallcovering on non-woven backing
Description	A fine ribbed velvet structure
Dimensions	Width 135 cm (53.15"), sold by the linear metre/yard
Pattern repeat	Free match 0 cm (0.00")
Remark	Typical for velvet are the colour changes between the different panels and when stroking the fabric. This gives the collection Lush beautiful colour dynamics that ensure a luxurious appearance
Adhesive	Arte Clearpro or a good quality dispersion adhesive
How to paste	Paste the wall
Light resistance	Good lightfastness
How to remove	Strippable
Fire retardant US	Class A



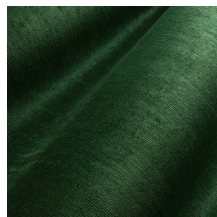
## Colourways (8)



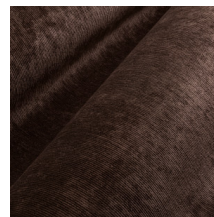
29500



29501



29502



29503



29504



29505



29506



29507

More info? [Click here](#)

Order samples, calculate quantities, view instructional videos, download technical information and more:  
[www.arte-international.com](http://www.arte-international.com)



ARTE®

wallcoverings for the ultimate in refinement