



BISEAU

Collection Marqueterie

Story behind the collection

The natural product sisal, a hardwearing fibre from the agave plant, forms the basis of the Marqueterie collection. The natural woven pieces are cut and arranged by hand in different patterns. The traditional marquetry or inlay reveals striking geometric figures. Both the different direction of the weave and the colours create an unusual depth and texture to this 100% hand-made wallcovering. Depending on the incidence of light and the viewing position, a subtle sheen will become apparent.

Technical specifications

Reference	<u>72720</u> • Gold Beige
Product category	Couture
Composition	Natural wallcovering on non-woven backing
Description	Inspired by a decorative frame with mitred corners. The different directions of the sisal weave give an optical 3D effect
Dimensions	Width 90 cm (35.43"), sold by the linear metre/yard
Pattern repeat	Straight match 25 cm (9.84")
Adhesive	Arte Clearpro or a good quality dispersion adhesive
How to paste	Paste the wall and wallcovering
Light resistance	Moderate lightfastness
How to remove	Strippable
Fire retardant EU	B-s1, d0
Fire retardant US	Class A
Maintenance	Spongeable during hanging (dab away damp glue)



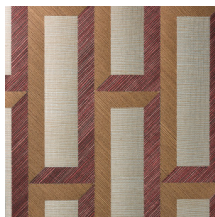
Colourways (7)



72720



72721



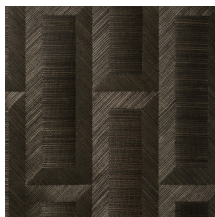
72722



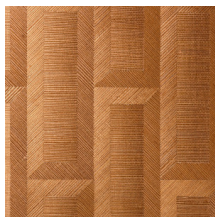
72723



72730

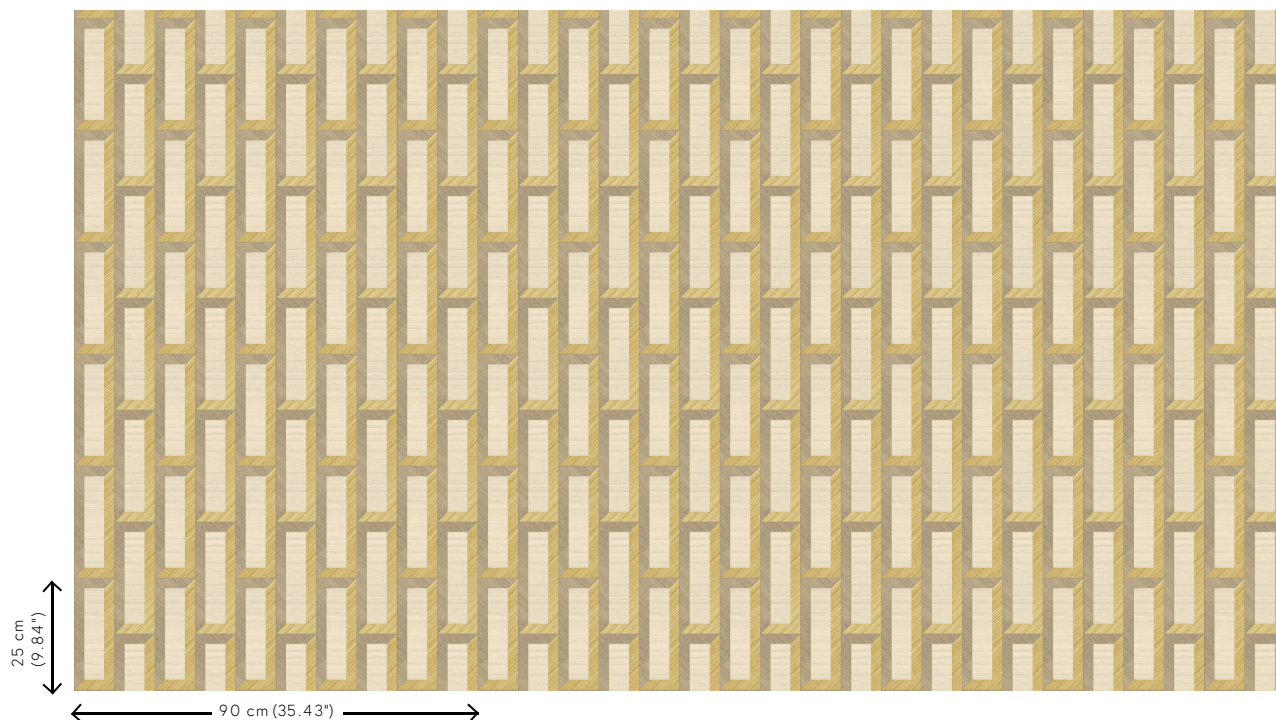


72731



72732

View



More info? [Click here](#)

Order samples, calculate quantities, view instructional videos, download technical information and more:
www.arte-international.com



ARTE®

wallcoverings for the ultimate in refinement